

## Lippes Mathias Serves as Sell-Side Counsel in Acquisition of VARO and BYL by Professional Credit Service



July 22, 2025 | **PRESS RELEASES**

Lippes Mathias LLP represented Virtual Accounts Receivable Outsourcing, LLC (VARO) and BYL Services, LLC (BYL) in their acquisition by Professional Credit Service, a portfolio company of a private investment firm focused on strategic transactions.

VARO and BYL provide first-party and third-party consumer debt collection services with an emphasis in the healthcare sector. The transaction underscores the strength of Lippes Mathias' mergers and acquisitions practice, particularly within the firm's [asset receivable management team](#), led by partner [Christian M. Lovelace](#).

The Lippes Mathias team advising on the deal included Lovelace, senior associate [Donell L. Gibson Jr.](#), and associate [Elyse J. Ponterio](#).

### **About Lippes Mathias LLP**

*Lippes Mathias is a full-service law firm with nearly 220 attorneys serving clients regionally, nationally, and internationally. With offices in Buffalo, Clarence, Albany, Long Island, New York, Rochester, Syracuse, and Saratoga Springs, N.Y.; Greater Toronto Area; Chicago, Ill.; Jacksonville, Tampa Bay, and West Palm Beach, Fla.;*

*Cleveland, Ohio; San Antonio, Texas; Oklahoma City, Okla. and Washington, D.C., the firm represents publicly and privately-owned companies, private equity and venture capital firms, independent sponsors, real estate developers, financial institutions, municipalities, governmental entities, and individuals.*

*Year after year, Lippes Mathias is proud to be recognized by The Best Lawyers in America®, U.S. News - Best Lawyers®, Super Lawyers, and Chambers USA. For more information, visit [www.lippes.com](http://www.lippes.com).*

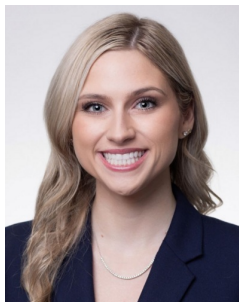
## Related Team



**Donell L. Gibson, Jr.**  
Senior Associate



**Christian M. Lovelace**  
Partner | Team  
Leader - Franchising  
& Licensing | Team  
Leader - Asset  
Receivable  
Management | Team  
Co-Leader -  
Corporate



**Elyse J. Ponterio**  
Associate