

Jillian E. Deck, Partner with Lippes Mathias Wexler Friedman LLP, Appointed to Mikey's Way Foundation Board of Directors

May 5, 2016 | **PRESS RELEASES**

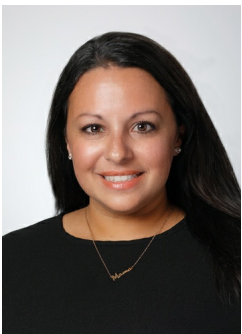
BUFFALO, NY –Lippes Mathias Wexler Friedman LLP is pleased to announce that Jillian E. Deck, a partner with the firm, has been appointed to the Mikey's Way Foundation board of directors.

Mikey's Way Foundation (MWF) received its vision from its founder, Michael "Mikey" Friedman and serves to help connect and enrich the lives of children suffering with cancer and other life-threatening illnesses. It is the goal of the foundation to be able to connect every child with their friends, family and school, enabling them to cope with the long hours, days and weeks of separation that they must endure.

Ms. Deck is a partner in LMWF's Banking and Financial Transactions Practice Group and represents regional, national and international senior lenders, equity sponsors and borrowers with secured transactions, asset-based financing, acquisition financing, commercial real estate loans, construction financing, syndicated loan transactions and SBA loans. She is a graduate of SUNY Buffalo Law School and SUNY Buffalo.

For more information, visit www.mikeysway.org.

Related Team



Jillian E. Deck

Partner | Team Co-
Leader - Banking &
Financial
Transactions

New York: Albany, Buffalo, Clarence, Long Island, New York City, Rochester, Saratoga Springs, Syracuse // **Florida:** Jacksonville, West Palm Beach
Illinois: Chicago // **Ohio:** Cleveland // **Oklahoma:** Oklahoma City // **Ontario:** Greater Toronto Area // **Texas:** San Antonio // **Washington, D.C**

Attorney advertising. Prior results do not guarantee a similar outcome.